

Resistance thermometer QUICKTEMP system - Type TP62/TW39...T500



CHARACTERISTICS

- **DOUBLE TRANSMITTER (4-20 MA OR HARD OUTPUT WITH 2-WIRE TECHNOLOGY)**
- **QUALITY ASSURANCE TESTS AND RETOOLING WITHOUT PROCESS INTERRUPTION AND WITHOUT LOOSENING THE ELECTRICAL WIRING.**
- **EXCHANGEABLE MEASURING INSERT WITH SPRING BEARINGS AND METALLIC CONTACT.**
- **VARIOUS DESIGNS FOR APPROPRIATE INSTALLATION, ADAPTATION TO EXISTING MEASURING POINTS WITHOUT DESIGN CHANGES.**
- **QUICK RESPONSE TIMES DUE TO TAPERED SENSOR TIPS**

DESCRIPTION

The **QUICKTEMP TP62** temperature sensor has 2 transmitters in the connection head, which may, for example, be used for indication and registration purposes. In addition, QA tests, repair and maintenance work are possible without having to interrupt the process and open the measuring point. The entire device, including the connection head and measuring insert can be taken out of the process without loosening the electrical cables. This saves time and resources and creates process security.

The measuring insert is a double PT100 sensor with spring bearings and metallic contacts to ensure good heat transmission and short response times. The design of the Quicktemp system is based on one basic device with various fitting lengths or process connections, assuming defined fitting lengths. For the user, this guarantees a high degree of flexibility, while at the same time minimising the storage costs.

The two standard TE42 transmitters installed have an mA output and can be programmed via the set-up plug. The connection head in the PA is robust and resistant to external environmental conditions (protection class IP 66); it ensures good access, including the cabling of the transmitters.

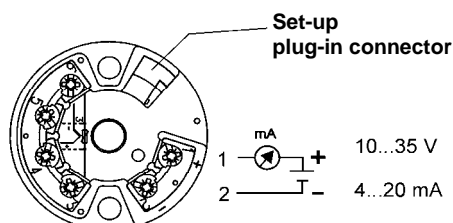
Resistance thermometer QUICKTEMP system - Type TP62/TW39...T500

TECHNICAL DATA

Design configuration:	- Basic device - TP62 for double transmitter
Type	BUKH form
Housing material	Polyamide PA
Temperature sensor	PT 100 according to EN 60751, insert pipe 1.4571
Material of measuring insert	stainless steel 1.4571
Diameter of measuring insert	continuously smooth, d = 3 mm, exchangeable
Length of measuring insert	MEL = 154 mm for T500
Connection, electrical	cable connection M20 x 1.5
Measuring insert, electrical	2 x PT 100 in 3-wire circuit
Type of connection, electrical	- transmitter TE 41/42, 4-20 mA, 2L, programmable, galvanically separated (TE41) - transmitter TE 52, HART - transmitter TE 82, Profibus PA - sheathed cable version (vibration-resistant version)
Temperature of measuring material	T _{max} at the sensor = -50... +200°C
Response times	T50 (measured in water): 6 s (design-dependent, d = 6 mm), < 6 s with tapered sensor tip, on request
Accuracy	tolerance class acc. to EN 60751, standard: Class A, optional: Class B 1/10, 1/3, 1/2 DIN
Protection type EN 60529	IP 66
Admissible pressure	design- and temperature-dependent
Process connections, standard	- Quicktemp zeh / TP16 – T500, G1/2, with metal sealing cone, total length = 117mm, El = 50 mm, d = 6 mm - Quicktemp zeh / TP15 – T500, smooth sensor, no threaded joint, total length = 117mm, El = 102 mm, d = 6 mm - Quicktemp zeh / TP136 - T475, welded spherical protection sleeve, DN = 25 mm, total length = 117mm, El = 50 mm, d = 6 mm - Quicktemp zeh / T535, smooth welded sensor, total length = 117mm, EL = 50 mm, d = 6 mm, tapered to d = 4 mm
Options:	(on request)
Process connections	- Quicktemp zeh / TP19, Varivent flange, d = 68 mm, fitting length = on request - Quicktemp zeh / TP26, M12x1,5 with metal sealing cone, further fitting lengths = on request
Calibration	factory calibration, calibration certificate (3-point or 5-point), traceable to DKD standard
Certificates	material certificate
CE conformity	EMV guidelines are met, CE symbol
Accessories:	(process connections: see data sheet - overview of WTH accessories)

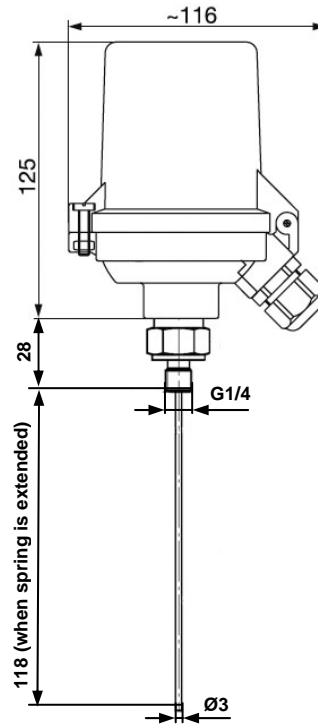
ELECTRICAL CONNECTION

For TE42 standard transmitter



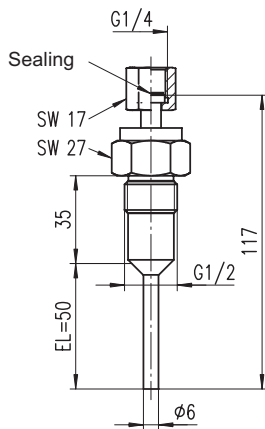
For other transmitters, see transmitter data sheet

DIMENSIONAL DRAWINGS

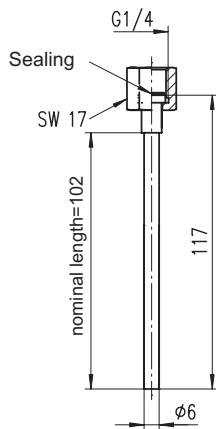


Quicktemp - basic device
TP62/TW39...T500
BUKH connection head

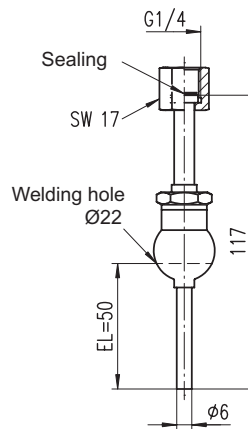
(SW = width across flats)



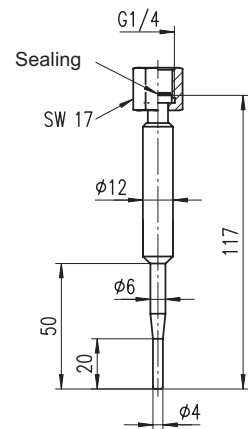
Quicktemp - sleeve zeh / TP16 - T500
metal sealing cone
Item 06402380



Quicktemp - sleeve zeh / TP15 - T500
smooth sensor, tapered tip
Item 06402381



Quicktemp - sleeve zeh / TP136 - T500
spherical welding socket
Item 06402382



Quicktemp - sleeve zeh / T535
smooth sensor, tapered tip
Item 06402400

Resistance thermometer QUICKTEMP system - Type TP62/TW39...T500



ORDER INFORMATION (type TP62/TW39)

Type	
TP62/TW39	Basic device
Sensor type, tolerance class, switch system	
E	2 x PT 100, class A, 3-wire
Connection head	
K	BUKH, polyamide PA (for double transmitter)
Installation length / nominal length (basic device TP62/T500)	
90	MEL = 154 mm
Output version	
L0	Transmitter (TE42), 4...20 mA, 2L (Standard) (double)
P0	Profibus PA transmitter (TE82)
Measuring range	
30	0...50 °C
40	0..100 °C
50	0...150 °C
60	0...200 °C
70	0...300 °C
80	0...400 °C
99	Other measuring ranges

TP62/TW39	E	K	90			T500
-----------	---	---	----	--	--	------

Process adaptation for QUICKTEMP system	(please order separately)
QUICKTEMP sleeve, zeh / TP16 - T500, with metallic sealing cone G½ B	Item No. 06402380
QUICKTEMP sleeve, zeh / TP15 - T500, with smooth sensor, cylindrical	Item No. 06402381
QUICKTEMP sleeve, zeh / TP136 - T500, with spherical welded socket	Item-No. 06402382
QUICKTEMP sleeve, zeh / T535, with smooth sensor, tapered tip	Item No. 06402400
Options / accessories:	please specify acc. to data sheet for TW-D-07 resistance thermometer

Our products are constantly in further development, therefore subjects to modifications.